

# iSolarCloud

SUPERIOR  
MONITORING.  
HIGHER YIELD.



## FAST



The iSolarCloud wizard guides you through commissioning in a breeze.

## EASY



Enjoy the most user-friendly monitoring with lucid tables and automated reports.

## SMART



Benefit from remote parameter setting and troubleshooting from wherever you are.

## CONNECTED



Share your power plants with colleagues and end-users.

## FUTURE-PROOF



Be always up to speed and get new features and frequent updates.

## SAFE



Your data is secured on a European server and is 100% GDPR compliant.

# GET STARTED

## CONNECT



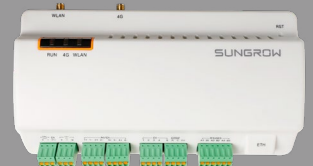
**WLAN module**  
connects  
1 device



**LAN module**  
connects  
1 device



**EyeM4**  
connects up to  
10 devices



**Logger1000**  
connects up to  
30 devices

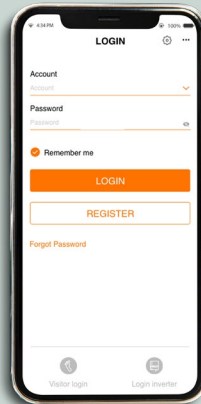
## SETUP



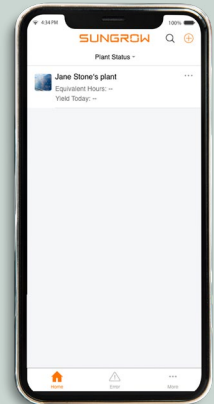
iSolarCloud



DOWNLOAD APP



CREATE ACCOUNT

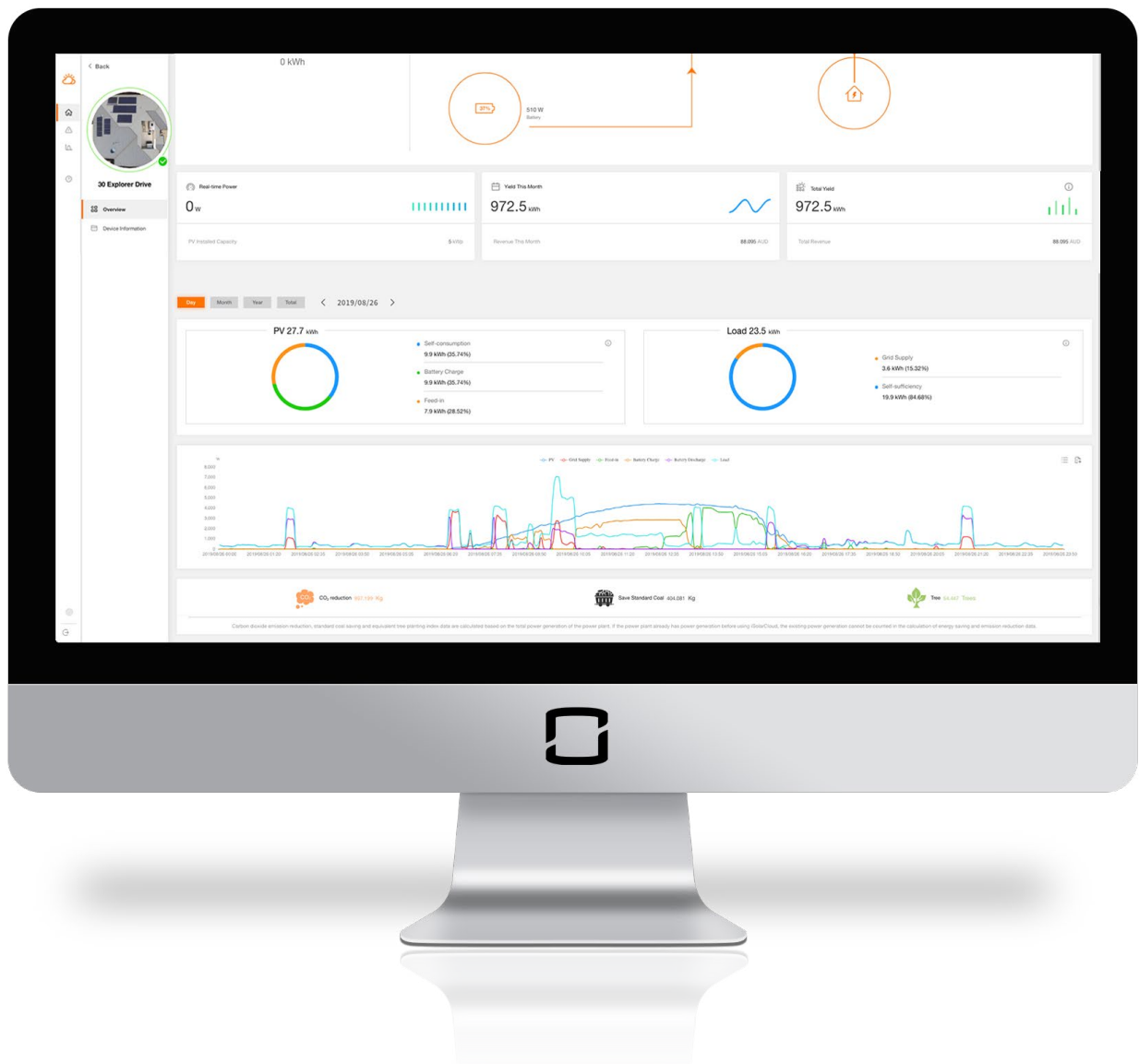


ADD PLANT

## HANDOVER



CREATE PDF COMMISSIONING REPORT



ENABLING **MORE POWER.**  
GET EXTRA FEATURES IN  
THE WEB INTERFACE.



### **REMOTE FIRMWARE UPDATE**

Download the latest inverter firmware versions from wherever you are.



### **ADVANCED REPORTS**

Benefit from detailed reports with extra information.



### **MASS PARAMETER SETTINGS**

Save time by setting mass parameters for several inverters at once.

**SEE YOU ON [WWW.ISOLARCLOUD.COM](http://WWW.ISOLARCLOUD.COM)**

# 8 PRO TIPS FROM THE LEAD DEVELOPER



**Garette Lei**

iSolarCloud Product Manager  
Sungrow Headquarter China

- 1 EUROPEAN SERVER**  
Choose the European server when registering. This will ensure that your data will be secured GDPR compliant.
- 2 LOCAL ACCESS**  
Set inverter parameter via Bluetooth or WLAN module if an internet connection is not available. Login with user name "user" and password "pw1111".
- 3 SMART REPORTING**  
Get automated reports by email on a daily, weekly or monthly base and share them with multiple colleagues.
- 4 ADVANCED REPORTING**  
Check each inverter data as diagram or export excel tables for your own analysis.
- 5 PLANT SHARING**  
Set an access for end-users by adding their email-address in the commissioning process.
- 6 PRESENTER MODE**  
Switch to the grid view to visualize multiple plants. Show real time data, total yields and your commitment to clean power for all.
- 7 DETAILED DATA**  
Hover over a device in the power flow chart to quickly see more data. Real time current, voltage and more will instantly appear.
- 8 PERSONALIZED PLANT**  
Upload an image and add an address to personalize the pv power plant.

## ABOUT SUNGROW

With over 87 GW of clean power presently installed worldwide Sungrow is the global leading solar inverter specialist and the biggest solar inverter manufacturer in the world.

[WWW.SUNGROW-EMEA.COM](http://WWW.SUNGROW-EMEA.COM)  

SunGrow Deutschland GmbH | Balanstrasse 59 | 81541 Munich | Germany